



Proposal Document

Proposal:

1. To create a new primary school zone to serve primary education provision in the Countesswells development, with effect from August 2016; and
2. To create a new secondary school zone to serve secondary education provision in the Countesswells development, with effect from August 2016, and to include the zone of Kingswells School within the zone of the new secondary school, with effect from the time of opening of the new school; and
3. To put in place arrangements for interim education provision until a primary school and a secondary school are constructed within the Countesswells development.

The schools affected by this proposal are:

- **Bucksburn Academy**
- **Cults Academy**
- **Hazlehead Academy**
- **Airyhall School**
- **Cults School**
- **Hazlehead School**
- **Kingswells School**

Statutory Consultation Period

Friday 30th October 2015 to Friday 18th December 2015 (inclusive)

All submissions expressing views on the proposals detailed in this document should be made in writing or by email by 5.00pm on Friday 18th December 2015.

It is intended to respond to issues raised from correspondence within a report presented to the Education and Children's Service Committee on 24th March 2016.

Contents

List of Consultees

1. Background
2. The Proposals
3. The Affected Schools
4. Educational Benefits
5. Options for Consultation
6. Additional Information
7. Public Meetings
8. Submission of Views
9. Outcome of Consultation
10. Appendices

LIST OF CONSULTEES

Notice of the issuing of this Proposal Document will be provided to:

- The Parent Councils of the affected schools
- The parents of the pupils and children at the affected schools
- The parents of children expected to attend an affected school within 2 years of the date of publication of this Proposal Document
- The pupils at the affected schools
- The teaching and support staff at the affected schools
- The trade unions representatives of the above staff
- The Community Councils for the areas affected
- The Constituency MSP
- Regional MSPs for the area
- The Constituency MP
- Community Planning Partnership Board
- The Director of Corporate Governance, Aberdeen City Council
- The Director of Communities, Housing and Infrastructure, Aberdeen City Council

A copy of this document is available from:

- Aberdeen City Council, Marischal College, Broad Street, Aberdeen, AB10 1AB
- Public libraries in the vicinity of the schools affected
- Council buildings in the vicinity of the schools affected
- The schools affected by the proposal

The Proposal Document is also available on the Aberdeen City Council website:

<http://www.aberdeencity.gov.uk/countesswells-rezoning>

This document is available in alternative formats or in translated form for readers whose first language is not English. Please apply to Education and Children's Services, Marischal College, Broad Street, Aberdeen, AB10 1AB, by telephone on 01224 523347; or by e-mail:

schoolestate@aberdeencity.gov.uk

STATUTORY CONSULTATION

1. BACKGROUND

ABERDEEN CITY COUNCIL’S VISION FOR EDUCATION

- 1.1 Aberdeen City Council has a Vision which conveys a picture of the aspirations and expectations of our service users, stakeholders and the wider community and makes clear linkage to the Corporate Vision and six key strategic priorities:

Our Corporate Vision is:

For Aberdeen to be an ambitious, achieving, smart city with the following strategic priorities:



- 1.2 Our vision for Education is:

Improving learning opportunities to deliver better outcomes.

- 1.3 The Council reported reviews of its secondary school estate and primary school and nursery estate to the former Education, Culture and Sport Committee meetings of 28th October 2010 and 7th February 2013 respectively. At the meeting on 7th February 2013, elected members accepted the following recommendations for the Countesswells development:

<i>Airyhall</i>	<p><i>(15) Rezone remote part of zone to create new zone in Countesswells development and build new school...; all pupils from Countesswells development to be initially educated at Braeside School and Hazlehead Academy whilst new primary and secondary schools are built.</i></p> <p><i>To create a new delineated area within the Countesswells development to include the separated zone of Airyhall and part of the existing Cults primary school zone to accommodate all pupils from the Countesswells development; this will require two new build primary schools and one academy.</i></p>
-----------------	---

<i>Cults</i>	<p><i>To accept recommendation (15) that all pupils from Countesswells development to be initially educated at Braeside School and Hazlehead Academy whilst new Primary and Secondary Schools are built; to rezone remote part of zone to create new zone in Countesswells development and build new school.</i></p> <p><i>To accept recommendation (16) to create new delineated area within Countesswells development to include part of existing Cults primary school zone (in addition to the separated zone of Airyhall...) to accommodate all pupils from Countesswells development; this will require two new build primary schools and one academy.</i></p>
<i>Kingswells</i>	<i>To accept recommendation to establish new secondary zone in Countesswells area.</i>

1.4 This Proposal Document therefore seeks comment on:

- The proposal to create a new school zone for a primary school in Countesswells, amending the current school zones of Cults School and Airyhall School; and separately
- The proposal to create a new school zone for a secondary school in Countesswells, amending the current school zones of Bucksburn Academy, Cults Academy and Hazlehead Academy, and separately
- The inclusion of Kingswells School within the newly created Countesswells Associated School Group, with effect from the time of opening of the new school; and separately
- The proposed interim arrangements until a primary school and a secondary school are constructed within the Countesswells development.

LOCAL DEVELOPMENT PLAN 2012

- 1.5 The Local Development Plan 2012 for Aberdeen City Council identified a residential development opportunity in Countesswells. This development will result in up to 3,000 new houses being constructed between 2015 and 2030. This area is highlighted as “OP58” in the map attached at Appendix 1 of this proposal document.
- 1.6 The impact of this substantial development on schools in the local area is considered in Section 3 of this document.

2. THE PROPOSALS

- 2.1 It is anticipated that the development at Countesswells will generate a significant number of new school pupils in this area of the city, and the existing primary and secondary schools in the area do not have sufficient capacity to accommodate these pupils. The anticipated impact of the Countesswells development on the existing schools in the area, if no changes to school zones were to be implemented, is detailed in Section 3.
- 2.2 In order to address the shortfall in pupil capacity, new primary and secondary schools will be built to serve the new development, and new school zones will need to be established in order to determine which pupils will attend these new schools.

- 2.3 In order to create the new school zones, some changes to the existing school zones in the local area will be required, and the proposed changes are indicated in the maps attached at Appendices 2 to 5 of this proposal document. The effects of the new school zones on the existing schools in the area are detailed in Section 3 below.
- 2.4 It is anticipated that the new secondary school at Countesswells will have additional pupil capacity, beyond that required for the pupils living within the area of the development itself. In order to relieve capacity pressures on Bucksburn Academy, it is therefore further proposed that Kingswells Primary School, which is currently included within the Bucksburn Academy Associated Schools Group, is rezoned to the new Countesswells Associated Schools Group. This proposed change is illustrated in the maps attached at Appendices 4 and 5 of this proposal document.
- 2.5 Based on the projected pupil roll increases for both Airyhall School and Cults School, it is proposed to have the first new primary school in Countesswells constructed by 2019. Until the new primary school is operational, it is proposed to educate primary aged pupils from Countesswells at Airyhall School, using the nearby Braeside School building as an annex to Airyhall, to provide the required additional classroom capacity that will be required.
- 2.6 It is proposed that the new secondary school at Countesswells will be constructed by 2022. Until the new secondary school is operational, it is proposed that secondary aged pupils from Countesswells will be educated at Hazlehead Academy.
- 2.7 The timescales for implementing the proposed changes and for opening new schools are dependent on the rate at which new homes are built and become occupied in the new housing development. All timescales provided in this document are estimates based upon the information currently available, and are subject to change, in line with any revisions to build rates which may be made by the developers during the course of the development.

3. THE AFFECTED SCHOOLS

Airyhall School

3.1 Table 1 (below) details the forecasted pupil rolls of Airyhall School, including the number of pupils who would be expected to be zoned to the school from the Countesswells development if the existing school zone was to remain unchanged. The table also details the impact on Airyhall School if a separate zone for Countesswells were to be created.

Table 1: Airyhall School Current and Projected Pupil Rolls¹

	Current	Forecast Pupil Numbers						
	2015	2016	2017	2018	2019	2020	2021	2022
Airyhall School (including Countesswells)	346	392	429	457	496	535	576	608
Cumulative number of pupils from Countesswells (zoned to Airyhall School)	<5	14	40	72	110	146	186	224
Airyhall School (excluding Countesswells)	N/A *				386	389	390	383

**Figures for the pupil roll excluding Countesswells have been provided from 2019 onwards, as it is anticipated that the new primary school at Countesswells will not be open before then. Countesswells pupils will continue to attend Airyhall School until this point, so they cannot be removed from the pupil roll forecasts prior to 2019.*

- 3.2 Whilst the current stated capacity of Airyhall School is 360 pupils, work is being undertaken to increase this capacity by creating up to 66 further spaces in the school, to accommodate the forecasted rise in pupil numbers shown above. However it is not possible to create sufficient capacity to accommodate the total numbers of pupils expected to be generated by the Countesswells development. It is anticipated that the school would be over capacity from 2017, and if the proposal to create a new primary school zone for Countesswells pupils was not accepted, the role would continue to increase significantly beyond the school's capacity year on year until at least 2022.
- 3.3 Table 1 shows that by 2022 there are expected to be 225 primary aged children from the Countesswells development who live in the current zone for Airyhall School. Should the rezoning proposals be accepted, these children would be resident in the new primary school zone for Countesswells, and would therefore attend the new primary school to be built within the Countesswells development. This would bring the overall pupil numbers for Airyhall School down to a maximum of 383 children in 2022, and there would be sufficient capacity in the school to accommodate these pupils.
- 3.4 Should the rezoning proposals be accepted, plans would be put in place to build a new primary school within the Countesswells development. The building of the new school would be programmed so that it opens at the point at which there is a sufficient and viable number of pupils living within the new school zone to attend the school. On the basis of the information currently available, it is anticipated that the new school would open in August 2019.
- 3.5 Prior to 2019, primary aged pupils from the new Countesswells development will be educated at Airyhall School. Given that the building on the Airyhall School site does not have sufficient capacity to accommodate all of the pupils from the Countesswells

¹ Current school rolls are based on the most recent publicly available data, from projections calculated in 2014. Projected pupil rolls take account of birth rates, new housing developments and placing requests to and from a school. This data is a best estimate based on the available information at the time of calculation. Due to rounding, numbers may not add up precisely to the totals provided.

development, it is proposed that the nearby Braeside School building is used as an annex to Airyhall School, to provide the required additional classroom space, until the new school at Countesswells has opened.

- 3.6 It is anticipated that the additional space at Braeside School would be required to be used from August 2017. Proposals for the organisation and operation of classes at Braeside would be developed with the head teacher at Airyhall School, in consultation with parents.
- 3.7 The report to the former Education, Culture & Sport Committee in February 2013, on the future of the primary school estate, included a proposal to rezone housing within the MacAulay Estate (i.e. the area within the vicinity of Macaulay Drive), from the Hazlehead Primary School zone to the Airyhall Primary School zone. Consultation on this proposal will be included within a separate consultation document to be published in early 2016, and does not form part of the proposals being consulted on in this document.

Cults School

- 3.8 Table 2 provides information on the projected pupil roll at Cults School to 2022.

Table 2: Cults School Current and Projected Pupil Rolls²

	Current	Forecast Pupil Numbers						
	2015	2016	2017	2018	2019	2020	2021	2022
Cults School (including Countesswells)	535	557	602	651	712	780	832	878
Cumulative number of pupils from Countesswells (zoned to Cults School)	<5	23	65	120	182	244	307	371
Cults School (excluding Countesswells)	533	534	537	531	530	537	524	506

- 3.9 The current stated capacity of Cults School is 540 pupils. Should the rezoning proposals not be approved by the Education and Children's Services Committee following the public consultation exercise, Cults School would go beyond its maximum capacity in August 2016.
- 3.10 It is anticipated that by 2022 the houses built in Countesswells which are zoned to Cults School will generate 371 additional pupils. If the rezoning proposals are approved, these pupils would be resident in the new primary school zone for Countesswells, and would therefore attend the new primary school to be built within the Countesswells development.

² Current school rolls are based on the most recent publicly available data, from projections calculated in 2014. Projected pupil rolls take account of birth rates, new housing developments and placing requests to and from a school. This data is a best estimate based on the available information at the time of calculation. Due to rounding, numbers may not add up precisely to the totals provided.

- 3.11 Prior to the opening of the new school at Countesswells (which is anticipated to be in 2019), it is proposed that pupils from the area of Countesswells currently zoned to Cults School, would instead be educated at Airyhall School, making use of Braeside School as an annex to Airyhall, as described in Paragraphs 3.5 and 3.6 above.
- 3.12 If the proposals are approved, then Table 2 shows that the pupil roll at Cults School is forecast to remain within the capacity of the school until at least 2022.

Hazlehead School

- 3.13 The proposed changes would require a small section of land, which is adjacent to Hazlehead Golf Course and currently within the Hazlehead Primary School zone, to be rezoned to the new Countesswells primary school zone. This change is indicated on the maps shown in Appendices 2 and 3. It is not anticipated that this change will have any material effect on the pupil roll at Hazlehead School.
- 3.14 As stated in Paragraph 3.7 above, the report to the former Education, Culture & Sport Committee in February 2013, on the future of the primary school estate, included a proposal to rezone housing within the MacAulay Estate (i.e. the area within the vicinity of Macaulay Drive), from the Hazlehead Primary School zone to the Airyhall Primary School zone. Consultation on this proposal will be included within a separate consultation document to be published in early 2016, and does not form part of the proposals being consulted on in this document.

Kingswells School and Bucksburn Academy

- 3.15 As noted in the table at paragraph 1.3 (above), the former Education, Culture and Sport Committee of 7th February 2013 agreed to consult on the rezoning of Kingswells School to a new secondary school in Countesswells at a future date. This proposal has been recommended for two principal reasons:
1. To create a secondary school in Countesswells which has a sustainable pupil roll for the long term; and
 2. To provide capacity within Bucksburn Academy to accommodate the additional pupils from residential developments in the north west of Aberdeen.
- 3.16 This change would mean that pupils attending Kingswells School, who currently move on to Bucksburn Academy when reaching secondary school age, would instead move on to the new secondary school within the Countesswells development, after the new secondary school has opened.
- 3.17 If this proposal were to be accepted, it is anticipated that the rezoning would be implemented from the point at which the new secondary school at Countesswells is opened. Based on the information currently available, it is anticipated that this would be from August 2022. However the changes would be implemented gradually, taking into account the needs of existing pupils at Kingswells School and Bucksburn Academy.
- 3.18 Pupils from the Kingswells area already attending Bucksburn Academy when the new Countesswells secondary school has opened, would have the option of continuing their education at Bucksburn Academy, rather than transferring to the new secondary school.
- 3.19 In addition, pupils from Kingswells Primary School reaching secondary school age after the new Countesswells secondary school has opened, and who at that time have older siblings

already attending Bucksburn Academy, would have the option of also moving to Bucksburn, rather than to the new secondary school, so that family groups could remain together.

- 3.20 This proposal would help to reduce pressure on pupil capacity at Bucksburn Academy, where spaces will be required for pupils generated by other new housing developments in the north west of the city.
- 3.21 Table 5 (below) shows the projected pupil roll for Bucksburn Academy, including pupils from Kingswells Primary School. It also shows the effect on the pupil roll if the numbers of pupils from Kingswells were removed and rezoned to a new Countesswells secondary school instead.

Table 5: Bucksburn Academy Current and Projected Pupil Rolls³

	Current	Forecast Pupil Numbers						
	2015	2016	2017	2018	2019	2020	2021	2022
Bucksburn Academy (including pupils from Kingswells)	550	565	581	623	663	703	752	826
Cumulative number of pupils from Kingswells	46	102	159	216	254	275	279	295
Bucksburn Academy (excluding Kingswells)	N/A*							533

**Figures for the pupil roll excluding Kingswells are provided for 2022 only, as it is anticipated that the new secondary school at Countesswells will not be open before then. All pupils from Kingswells would continue to attend Bucksburn Academy up until that point.*

- 3.22 The stated capacity at Bucksburn Academy is 683, and so the school is set to be over capacity from 2020. It is anticipated that the new secondary school at Countesswells will open in August 2022. Prior to this time, pupils from Kingswells School will continue to attend Bucksburn Academy. Interim measures will be introduced at Bucksburn to ensure there is sufficient capacity within the building for the additional pupils, prior to the new school opening in 2022.
- 3.23 Implementing the proposed changes to the secondary school zone for Kingswells Primary School would bring the school roll at Bucksburn back within the capacity of the building from 2022.
- 3.24 The forecast for 2022 provided in the table above should be treated with some caution, as it assumes that all pupils from Kingswells already at Bucksburn Academy would transfer immediately to the new Countesswells secondary school as soon as it opens. In reality, it is likely that most pupils who had already started at Bucksburn Academy, would choose to continue their education at the school, rather than moving to the new Countesswells secondary school.
- 3.25 In addition, many pupils from Kingswells Primary School who reach secondary school age after the new Countesswells secondary school has opened, and who at that time have older siblings already at Bucksburn Academy, may choose to move to Bucksburn, rather than to

³ Current school rolls are based on the most recent publicly available data, from projections calculated in 2014. Projected pupil rolls take account of birth rates, new housing developments and placing requests to and from a school. This data is a best estimate based on the available information at the time of calculation. Due to rounding, numbers may not add up precisely to the totals provided.

the new secondary school, so that family groups can remain together. The impact of this proposal on the roll at Bucksburn Academy would therefore be a gradual one, over a number of years beyond 2022.

Hazlehead Academy

- 3.26 Table 3 (below) details the forecasted rolls of Hazlehead Academy, including the number of pupils who would be expected to be zoned to the school from the Countesswells development if the school zone was to remain unchanged. The table also details the impact on Hazlehead Academy if a separate secondary school zone for Countesswells were to be created.

Table 3: Hazlehead Academy Current and Projected Pupil Rolls⁴

	Current	Forecast Pupil Numbers						
	2015	2016	2017	2018	2019	2020	2021	2022
Hazlehead Academy (including Countesswells)	821	799	820	858	885	948	1015	1079
Cumulative number of pupils from Countesswells (zoned to Hazlehead Academy)	<5	<5	14	29	45	65	86	112
Hazlehead Academy (excluding Countesswells)	N/A*							968

**Figures for the pupil roll excluding Countesswells have been provided for 2022 only, as it is anticipated that the new secondary school at Countesswells will not be open before then. Countesswells pupils will continue to attend Hazlehead Academy until this point, so they cannot be removed from the pupil roll forecasts prior to 2022.*

- 3.27 The stated capacity of Hazlehead Academy is 1008. If no changes to school zones were to be implemented, the school would reach its capacity by 2021.
- 3.28 It is anticipated that the new secondary school at Countesswells will open in August 2022. Prior to this, it is proposed that secondary aged pupils from Countesswells will be educated at Hazlehead Academy. The pupil roll forecast for 2021 will be carefully monitored, and interim measures will be introduced to ensure there is sufficient capacity within the building for the additional pupils, prior to the new school opening in 2022.
- 3.29 By implementing the proposed new secondary school zone for Countesswells, the pupil roll at Hazlehead would be reduced to 968 by the year 2022, bringing it back within the capacity of the building.

⁴ Current school rolls are based on the most recent publicly available data, from projections calculated in 2014. Projected pupil rolls take account of birth rates, new housing developments and placing requests to and from a school. This data is a best estimate based on the available information at the time of calculation. Due to rounding, numbers may not add up precisely to the totals provided.

Cults Academy

3.30 Table 4 (below) details the forecasted rolls of Cults Academy, including the number of pupils who would be expected to be zoned to the school from the Countesswells development if the school zone was to remain unchanged. The table also details the impact on Cults Academy if a separate secondary school zone for Countesswells were to be created.

Table 4: Cults Academy Current and Projected Pupil Rolls⁵

	Current	Forecast Pupil Numbers						
	2015	2016	2017	2018	2019	2020	2021	2022
Cults Academy (including Countesswells)	1056	1049	1031	1073	1091	1126	1176	1267
Cumulative number of pupils from Countesswells (zoned to Cults Academy)	<5	9	29	57	88	125	165	210
Cults Academy (excluding Countesswells)	1055	1039	1003	1016	1003	1000	1011	1057

3.31 The stated capacity of Cults Academy is 1141. If no changes to school zones were to be implemented, the school would reach its capacity by 2021. Prior to the new secondary school at Countesswells opening in 2022, it is proposed that all pupils from Countesswells will be educated at Hazlehead Academy, with effect from August 2016. If the proposals are accepted, the numbers of pupils from Countesswells would therefore be removed from the forecasts for Cults Academy, from 2016 onwards.

3.32 By implementing the proposed new secondary school zone for Countesswells, the pupil roll at Cults Academy would be reduced to 1011 by the year 2021, bringing it back within the capacity of the building.

4. EDUCATIONAL BENEFITS

4.1 The proposal to create new primary and secondary school zones within the area of the new Countesswells development will have the following benefits:

- It will assist in reducing predicted long term capacity problems within Airyhall and Cults Primary schools and within Cults Academy and Bucksburn Academy from 2019 and beyond;
- It will ensure that pupils living in the Countesswells development can attend primary and secondary school with peers from their community;

⁵ Current school rolls are based on the most recent publicly available data, from projections calculated in 2014. Projected pupil rolls take account of birth rates, new housing developments and placing requests to and from a school. This data is a best estimate based on the available information at the time of calculation. Due to rounding, numbers may not add up precisely to the totals provided.

- The new Countesswells primary and secondary schools will have sustainable and viable pupil rolls which will enable the schools to deliver the full breadth of Curriculum for Excellence;
- A sustainable roll ensures that effective teacher staffing levels are maintained and led by a range of promoted teaching staff. Effective year group classification will be maintained and children will be able to learn within a variety of peer group opportunities, both formally and informally;
- The proposal will ensure that the new schools have a clear and distinct association with their local communities.
- If implemented, this proposal will assist Aberdeen City Council in delivering a city wide primary education provision which is delivered in schools with sustainable pupil rolls and in buildings which are not over crowded.

4.2 The above benefits will therefore ensure that the implementation of this proposal will maximise the educational benefits for pupils attending all of the existing schools in this area of the city, as well as the new schools to be constructed in the Countesswells development.

5. OPTIONS FOR CONSULTATION

- 5.1 The options under consideration and for which the Council seeks comment from interested stakeholders are:
- (i) To retain the status quo and maintain the existing school zones in the area of the Countesswells development; or
 - (ii) To create new primary and secondary school zones to serve primary and secondary provision in the Countesswells development, with effect from August 2016, and to include the zone of Kingswells school within the zone of the new secondary school at Countesswells, with effect from the time of opening of the new primary school.

6. ADDITIONAL INFORMATION

- 6.1 To assist stakeholders in accessing relevant information, a dedicated area of Aberdeen City Council's website has been populated with all information within this consultation document, along with further detail on the consultation process and data relating to the proposal.

The relevant web pages can be accessed at:

<http://www.aberdeencity.gov.uk/countesswells-rezoning>

Please contact us on the telephone number below if you want this document in Braille, large print or on an audio CD, or if you want the document translated into another language.

إذا كنت تود الحصول على هذه الوثيقة بالخط العريض أو البريل أو الأشرطة الصوتية المدمجة أو كنت تود ترجمتها إلى لغة أخرى فالرجاء الاتصال بنا على الهاتف أدناه.

আপনি যদি এই দলিলটি ব্রেইলে, বড় ছাপার অক্ষরে বা শোনার জন্য সিডি, অথবা দলিলটি অন্য কোন ভাষায় অনুদিত চান তবে অনুগ্রহ করে নীচের টেলিফোন নম্বরে ফোন করে আমাদের সাথে যোগাযোগ করুন।

如欲索取此文件的凸字版、大字版、語音光碟，或其他語文翻譯本，請致電下列號碼。

Proszę się skontaktować z nami pod poniższym numerem telefonu jeśli ten dokument jest wymagany w alfabecie Braille, w dużym druku, na płycie kompaktowej CD lub przetłumaczony na inny język.

Пожалуйста, свяжитесь с нами по номеру телефона, указанному ниже, если Вы хотите получить этот документ шрифтом Брайля, крупным шрифтом или на компактном аудио диске, а также если Вам нужен перевод этого документа на другой язык.



01224 523347

6.2 A copy of this statutory consultation document will be available for public consultation during the period of consultation at the following venues:

- Marischal College
- Central Library
- Cults Library
- Airyhall Library
- Bucksburn Academy
- Cults Academy
- Hazlehead Academy
- Airyhall School
- Cults School
- Hazlehead School
- Kingswells School
- Cults Learning Centre
- Hazlehead Learning Centre
- Kingswells Community Centre

7. PUBLIC MEETINGS

7.1 A series of public meetings to discuss the proposals will take place in November and December, as follows:

- **Tuesday 24th November 2015 from 7.00pm to 8.00pm at Bucksburn Academy**
- **Thursday 26th November 2015 from 7.00pm to 8.00pm at Kingswells School**
- **Tuesday 1st December 2015 from 7.00pm to 8.00pm at Hazlehead Academy**
- **Wednesday 2nd December 2015 from 7.00pm to 8.00pm at Cults Academy**

Members of the public are invited to attend any one of the above meetings; it would not be necessary to attend more than one meeting.

8. SUBMISSION OF VIEWS

- 8.1 Any interested stakeholders may respond to the consultation by completing the comment form attached at Appendix 6, and sending it to:

Countesswells Consultation
Education & Children's Services
Aberdeen City Council
Business Hub 13
Second Floor North
Marischal College
Broad Street
ABERDEEN
AB10 1AB

Responses may also be submitted in writing to the address above, or by sending an email to:

schoolestate@aberdeencity.gov.uk

All responses should be submitted before 5.00pm on Friday 18th December 2015.

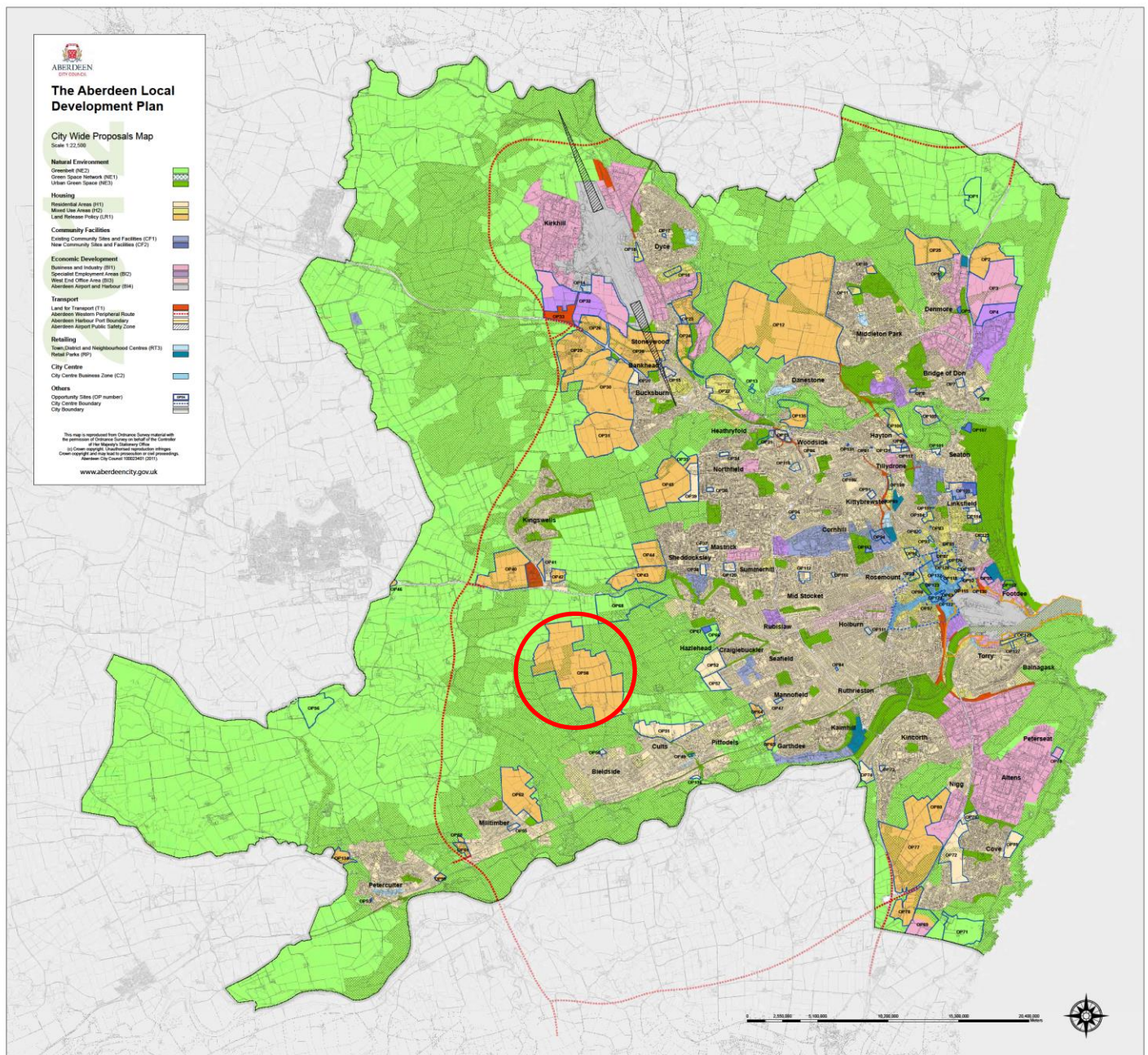
9. OUTCOME OF CONSULTATION

- 9.1 A summary of submissions will be published on the council website at

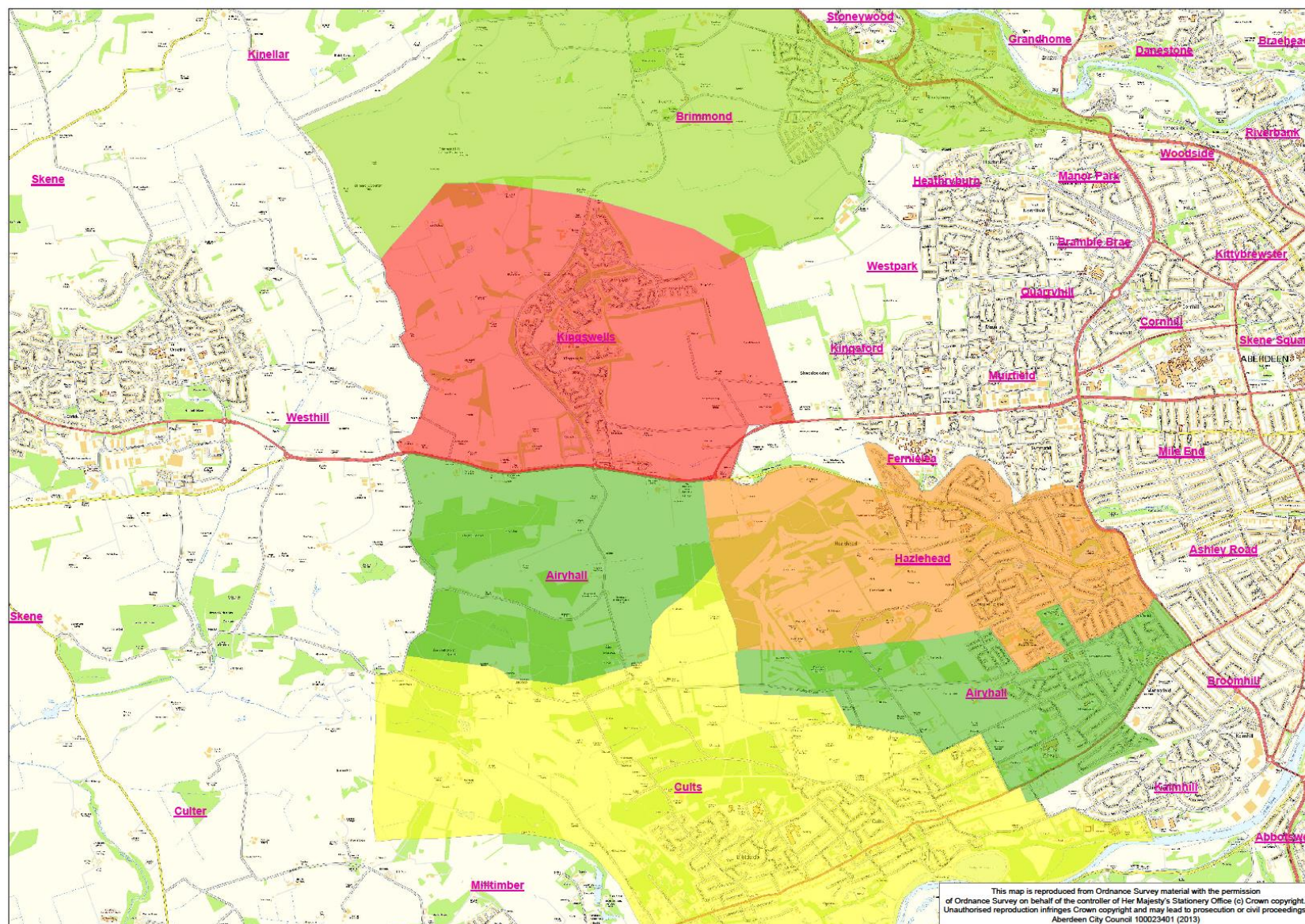
<http://www.aberdeencity.gov.uk/countesswells-rezoning>

- 9.2 A report on the consultation will be delivered to the Education & Children's Services Committee on 24th March 2016. This will provide information for Elected Members to make a final decision on the proposal.

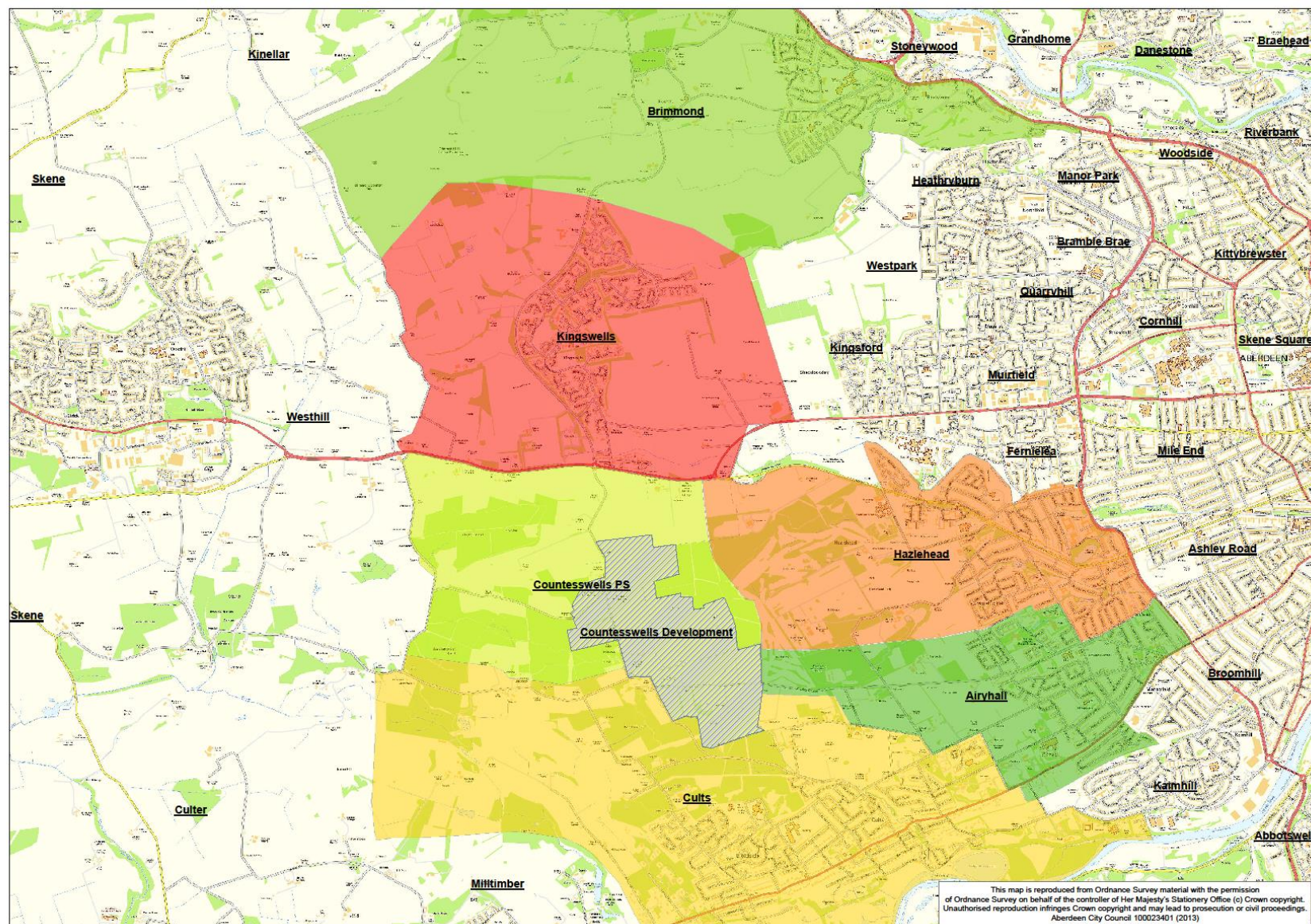
LOCATION OF THE NEW COUNTESSWELLS DEVELOPMENT (OP58 - circled)



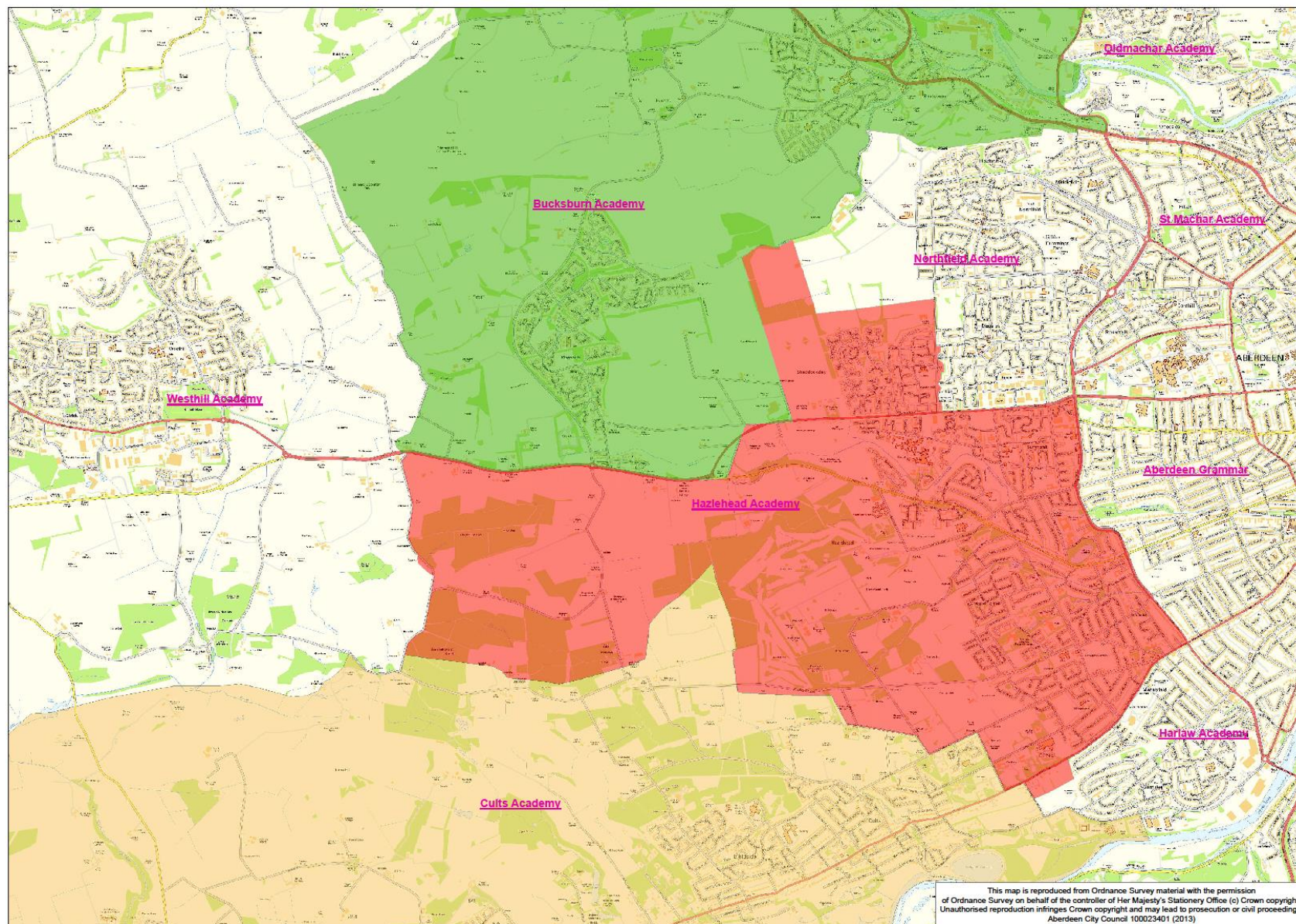
EXISTING PRIMARY SCHOOL ZONES



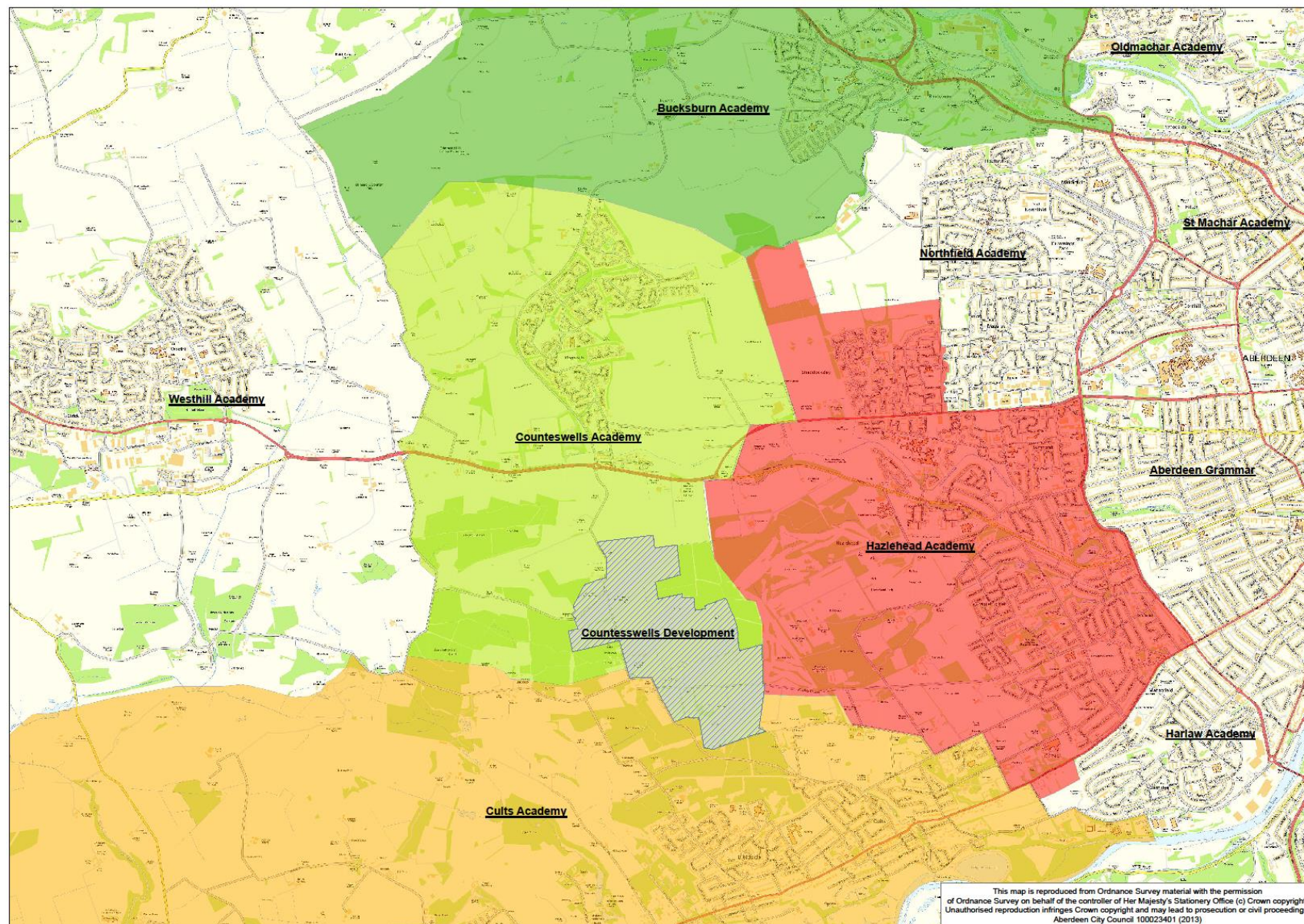
PROPOSED NEW PRIMARY SCHOOL ZONES WITH COUNTESSWELLS DEVELOPMENT



EXISTING SECONDARY SCHOOL ZONES



PROPOSED NEW SECONDARY SCHOOL ZONES WITH COUNTESSWELLS DEVELOPMENT



Comment Form

Public Consultation

Proposal:

- 1. To create a new primary school zone to serve primary education provision in the Countesswells development, with effect from August 2016; and**
- 2. To create a new secondary school zone to serve secondary education provision in the Countesswells development, with effect from August 2016, and to include the zone of Kingswells School within the zone of the new secondary school, with effect from the time of opening of the new school; and**
- 3. To put in place arrangements for interim education provision until a primary school and a secondary school are constructed within the Countesswells development.**

All completed comment forms will be included in a final Consultation Report to the Education & Children's Services Committee.

Contact Information (Optional)

Provision of personal information is optional. Your personal details will not be published, nor will they be used for any purpose without your expressed consent.

First name(s):	
Last name:	
Address:	
Postal Code:	
Phone:	
Email:	
I am a parent/carer of current primary pupil(s) parent/carer of current secondary pupil(s) parent/carer of future pupil(s) (pre 5 child) local resident other If other, please describe:	Please tick (✓) all applicable boxes <div style="display: flex; align-items: center; margin-bottom: 10px;"> <input type="checkbox"/> School name: </div> <div style="border-bottom: 1px solid black; width: 100%;"></div> <div style="display: flex; align-items: center; margin-bottom: 10px;"> <input type="checkbox"/> School name: </div> <div style="border-bottom: 1px solid black; width: 100%;"></div> <div style="display: flex; align-items: center; margin-bottom: 10px;"> <input type="checkbox"/> </div> <div style="display: flex; align-items: center; margin-bottom: 10px;"> <input type="checkbox"/> </div> <div style="display: flex; align-items: center; margin-bottom: 10px;"> <input type="checkbox"/> </div>

What is the most positive part of the proposal (if any)?

What is/are your main concern(s) about the proposal (if any)?

What would you like the Council to know about the proposal?

Overall, do you support the proposal? (Please tick) Yes ☐ No ☐

Any other comments?

Thank you for your comments.

Please send this form to:

Countesswells Consultation
Education & Children's Services
Aberdeen City Council
Business Hub 13
Second Floor North
Marischal College
Broad Street
ABERDEEN
AB10 1AB

or by email to

schoolestate@aberdeencity.gov.uk

by **5.00pm on Friday 18th December 2015.**

Further information about the consultation process, including a full list of all meetings, as well as the Consultation Document, is available from the Council website at

<http://www.aberdeencity.gov.uk/countesswells-rezoning>